



richmond refinery newsletter november 2017

# richmond today

human energy®

## increasing our capacity to monitor air quality



By Shawn Lee

Chevron supports an independent community air monitoring program that provides real-time data on air quality in Richmond. This is an important tool to help residents better understand the

health of our air in the community.

Started in 2013, the system includes three air monitoring lasers along the refinery's fence line and three neighborhood stations in Point Richmond, North Richmond and Atchison Village.

The system collects and publishes data 24 hours per day, 7 days a week, and is available for anyone to view at [www.fenceline.org/richmond](http://www.fenceline.org/richmond). Argos Scientific, which oversees the program, also compiles reports which help provide a complete picture about what's in the air.

The results show that air quality in Richmond is within the stringent health standards set by government regulators, including the U.S. Environmental Protection Agency and the California Office of Environmental Health Hazard Assessment.

While this is good news, we regularly review and improve our operations to minimize the potential impact on the community. Read more inside this newsletter to find out what we are doing to enhance the air monitoring program in Richmond.

Shawn Lee is the Health, Environment and Safety Manager at the Chevron Refinery

## Entender la calidad del aire de Richmond

Por Shawn Lee

Chevron apoya un programa independiente de vigilancia del aire de la comunidad que provee datos en tiempo real de la calidad del aire de Richmond. Es una herramienta importante para ayudar a los residentes a entender mejor la salud del aire en la comunidad.

El sistema, que inició en 2013, incluye tres rayos láser de vigilancia del aire a lo largo de la cerca de la refinería y tres estaciones vecinas en Point Richmond, North Richmond y Atchison Village.

El sistema recopila y publica datos las 24 horas del día, los siete días de la semana, que están a disposición del público en [www.fenceline.org/richmond](http://www.fenceline.org/richmond). Argos Scientific, que supervisa el programa, también compila informes que ayudan a proporcionar una imagen completa de lo que hay en el aire.

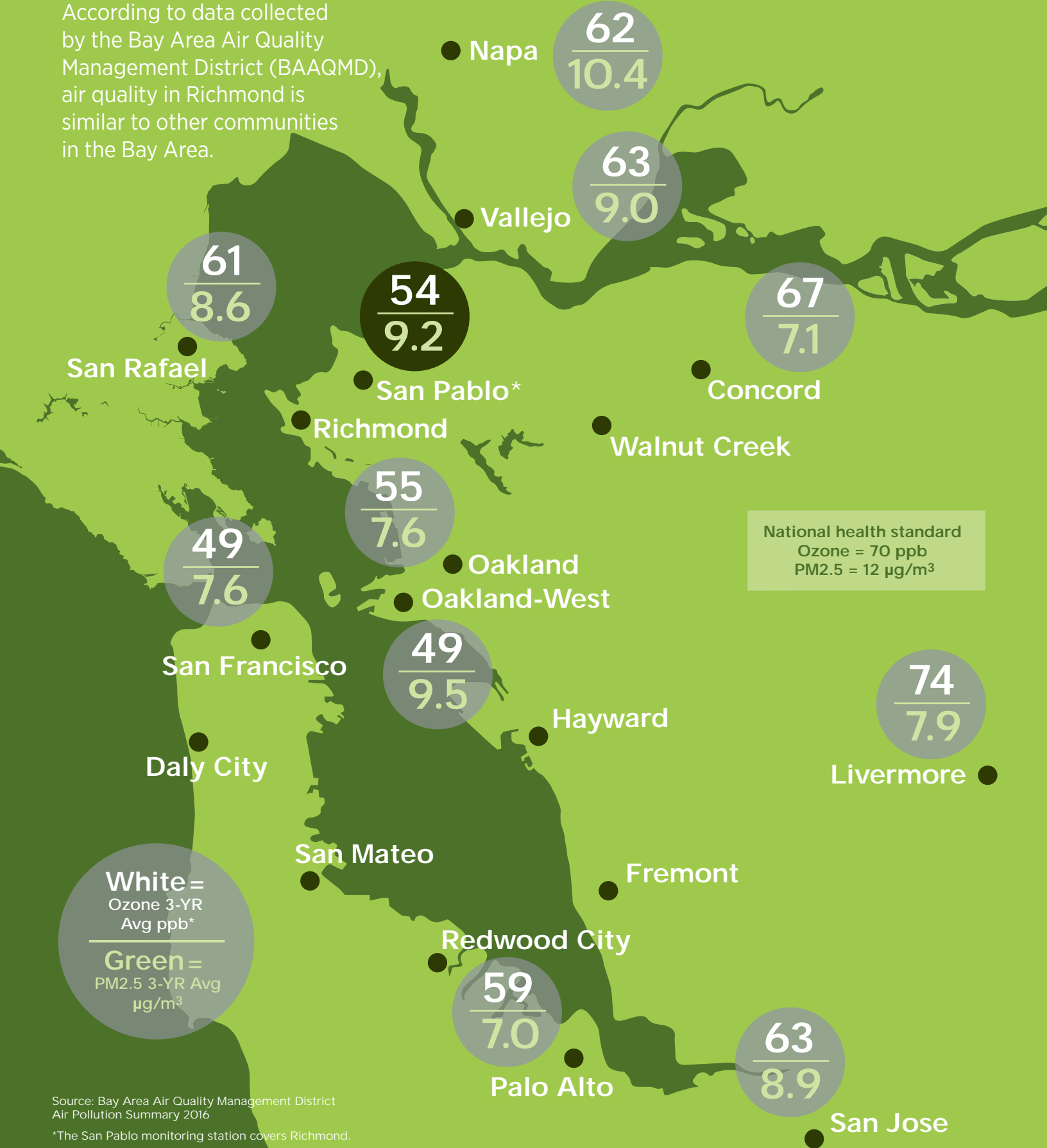
Los resultados indican que la calidad del aire de Richmond se encuentra dentro de las estrictas normas de salud establecidas por las agencias reglamentarias del gobierno, entre ellas, la Agencia de protección del medio ambiente de EE.UU. y la Oficina de California de Evaluación de Riesgos para la Salud Ambiental.

Aunque estas sean buenas noticias, generalmente revisamos, y mejoramos nuestras operaciones para reducir al mínimo las posibles repercusiones en la comunidad. Siga leyendo este boletín para averiguar qué estamos haciendo para mejorar el programa de vigilancia de aire de Richmond.

Shawn Lee es el Gerente de Salud, Medio Ambiente y Seguridad en la Refinería Chevron de Richmond

# richmond air quality: among the best in the Bay Area

According to data collected by the Bay Area Air Quality Management District (BAAQMD), air quality in Richmond is similar to other communities in the Bay Area.

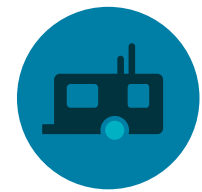


Source: Bay Area Air Quality Management District Air Pollution Summary 2016

\*The San Pablo monitoring station covers Richmond.

)' # ' &\* !). # ' " \$#

> > % \$> "> \$ " > " " %&# #>\$ \$ 8 8\$ 8 "\$\$\$ )>\$ > \$ "> ## #  
\$ \$ > " ? ")> > >\$ " > \$ #> > \$> 5 "\$> >  
\$ \$ > !% #> \$ > 5 &" >#> \$ > \$ > > # "7#>" \$> & "  
\$ > ? ")> "\$ #> > \$ "#> > > # \$ > "> #%" > \$ > # "  
% #> \$ > \$ "> > \$ "#> \$ > \$' \$> "\$> > > \$ # >  
#\$ \$ #> > > \$" > > # \$ > \$ > " " > # \$ >



)' ">!% \$>#>\$" >-/> %"#> > )5>2> )#> >' 5> % >'  
\$\$ " #5' > > \$ " > \$ \$ # %" #> > ## #4



" \$# )\$' ">!% \$> #%" \$#> " "> " > %\$ \$ )4> #>\$ \$ #  
\$ "> "> .> % #4



# \$' " #>#> " \$ > )> " #> \$ ? 5> > \$> ( "\$4  
\$ > #> > \$' ' ' 4 4 " 9" 4

\$" " \*# ).  
' " \$# )\$' #  
) ! )(  
> % #>" > )>  
\$ #>#> 5\$ > #%" & % #>  
" )> \$> \$ #> " #4  
">#> # # \$> > #>\$ \$> \$>  
)>## \$ > \$  
%#>" > \$>\$>4

● => #> \$> \$> \$>\$ " >  
● => #> \$>\$ " >

#/ # ●  
\*! \*' \$- ●  
\$!\* # ●  
.! # ●  
' \$ # \*! ●

\$\* #>#>  
' ' " #. (\$\*' ( \$ " (\$#( #) \$ " \*#).  
# !\* # , \$> (" \$ \$ \$ " \$) \$' + ! ( \$!\$ \* ) "\$ ! (\$\*' ( \$#(\*" ' % \$ \* ) ( ' ) ) \* ' ! \$ ) # ( # + # # " ! , 0 ) ) \$ # ' (\$\*' ( # ! \* # ' # ' ( ' (" !! (\$\*' \$ \$+ ' !! " (( \$#(

#>#> " & #> & " > \$"> > " !% \$> > 4 #> > > %> #%" > & "\$> > #> \$ % "# \$ > \$> \$> # ? > & \$>#>#> > #> \$ "> "\$> )> ?" #> & > " !% \$>6 " > \$ ">38. 5->+,2\$> & " > -40> & #> " > " ( \$ ) ?& \$ # & \$ #> "\$> \$ >+,1 & " 4 > " #> " > " ( \$ ) # & \$> \$ #> "\$> >" \$ # > " > > \$ ">+,14

) (\$# " \$# " \$#

!.

!.

< \$> \$4% \$> #%" > )> " #4> % x )> > -40#5 " >,->\* 9 -4-/8 %>x )> > -40#5 " >,->,\* 9 4

# Q & A

## a discussion with

### Axel Abellard of Argos Scientific



#### **Q Tell us about the air monitoring program.**

The Richmond Community Air Monitoring Program began in 2013. The system tracks 23 different compounds in the air. The community air monitoring stations in North Richmond, Point Richmond and the Atchison Village neighborhoods are designed to monitor a broad number of air pollutants so as to better understand Richmond air quality.

#### **Q Tell us more about the potential sources for air pollution in our community.**

The air monitoring system is very sensitive – the vapors from someone painting their house to the emissions from cars and trucks will be registered. The fenceline stations are designed to look for gases normally associated with refinery emissions, such as benzene and sulfur dioxide. The community stations, however, look at an expanded list of gasses, like ammonia. The community stations also monitor for particulate matter, which was very useful in tracking the air quality after the recent North Bay wild fires.

#### **Q What are the main sources of emissions that are being tracked by the system?**

Honestly, it all depends on which way the wind is blowing. Richmond is an urban area – so there are many sources of air pollution: gases and particulates from vehicles, the railroad, commercial maintenance, smoke from wood burning, as well as industrial sources are all detected by our system.

#### **Q Other than tracking emissions, are there other air quality issues that the system can monitor for?**

Absolutely. The stations detect and quantify gases every five minutes. Each location has a weather station that measures wind speed and direction. When combining the emissions data with weather data and known events, we can identify not only the level of air pollution, but also potentially support efforts to identify where it may have originated. Two great examples of this are the particulate matter samples measured during the October wild fires, and the fire that broke out in December 2016 at a local auto yard. Our systems are also equipped with an event sampling system that can be activated during an emergency.

#### **Q Is this program unique in the Bay Area?**

Yes – no other community has real-time combined fenceline and community or emergency event sampling systems. In fact, there is probably no other community in the world that has this level of air quality data available to them. We're very proud of the work we are doing.

#### **Q How is air quality in Richmond?**

The Bay Area Air Quality Management District is responsible for tracking air quality throughout the entire region. When you look at the data from their detection system, Richmond is on par with cities such as Oakland and San Francisco. We are consistently averaging better than many of our neighbors, and meet the state and national standards for particulate matter and ozone.

#### **Q Why is it important to track air quality?**

Air quality plays a significant role in people's health and is especially important for at-risk populations such as children and the elderly. The Richmond Community Air Monitoring Program plays a vital role in helping the community of Richmond understand what is in our air.

*Argos Scientific manages the ongoing operation, maintenance and data reporting for the Richmond Community Air Monitoring Program.*



**Chevron Richmond**  
841 Chevron Way  
Richmond, CA 94801



Presorted Standard  
U.S. Postage  
**PAID**  
Oakland, CA  
Permit No. 379

### for more information

Email [info@richmondrefinery.com](mailto:info@richmondrefinery.com)  
or call 510-242-2000. For noise  
and odor complaints, please contact  
510-242-2127.

### para más información

Email a [info@richmondrefinery.com](mailto:info@richmondrefinery.com)  
o llamando al número 510-242-2000.  
Para quejas relacionadas con ruidos  
y olores, por favor llame al número  
510-242-2127.

## community corner

# gdc kitchen – local catering, local ingredients



By Nick Dillard

I have been a professional chef for 25 years training in Italy, France and the US. Nothing has brought me as much joy as GDC Kitchen. Started four years ago as a home-based business that primarily served pastries, I partnered with other local food-lovers to turn that business into a full-service catering group: GDC Kitchen. We are based in Richmond and the majority of our staff is from the community. We serve a variety of clients such as Kaiser Permanente, the Craneway Pavilion, Chevron, Ellie Mae and Hospice on the Bay, among others. What sets us apart is the quality of our food and the personal touch we provide our clients. We source the majority of our food from local producers, and I work with each client to prepare a unique menu to fit their specific needs. One of the dishes I love as a chef is our Bistro Chicken, with lemon rice, apricots, scallions and pine nuts. And our jambalaya is one of our most popular dishes. Visit us online to learn more about our catering offerings at [www.gdckitchen.com](http://www.gdckitchen.com).

Nick Dillard is the Executive Chef and Partner of GDC Kitchen



# gdc kitchen – servicio de alimentos local, ingredientes locales

Por Nick Dillard

He sido chef profesional durante 25 años y he estudiado en Italia, Francia y los Estados Unidos. Nada me ha producido más alegría que GDC Kitchen. Empecé hace cuatro años como un negocio en casa sirviendo principalmente repostería. Luego me asocié con otros amantes de comida de la localidad y nos convertimos en un grupo de servicios completos de alimentos. Estamos ubicados en Richmond y la mayoría de nuestro personal es de la comunidad. Brindamos servicio a una variedad de clientes como Kaiser Permanente, el Craneway Pavilion, Chevron, Ellie Mae y Hospice on the Bay, entre otros. Lo que nos distingue es la calidad de nuestra comida y el toque personal que ofrecemos a nuestros clientes. Obtenemos la mayoría de nuestros alimentos de productores locales y trabajamos con cada cliente para preparar un menú único que se ajuste a sus necesidades específicas. Nuestro plato más solicitado es el pollo bistro al limón con arroz, cebollines y albaricoques. ¡Nuestra jambalaya también es inigualable! Visítenos en línea para obtener más información sobre nuestros servicios de alimentos en [www.gdckitchen.com](http://www.gdckitchen.com).

Nick Dillard es el chef ejecutivo y socio de GDC Kitchen